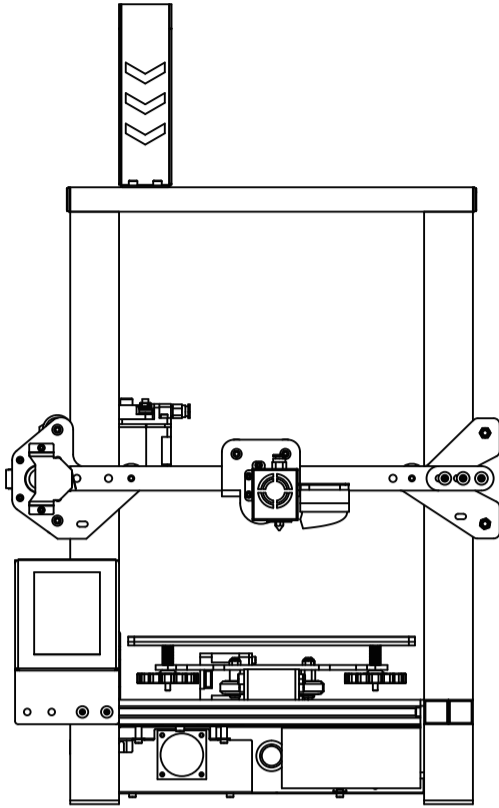


Quick Start Guide



LONGER LK 4 PRO 3D FDM PRINTER

Thank you for choosing our products.
Please read this manual carefully before use.

Please reference more details on digital manual in TF card about the operation of printer and installation of slicing software.

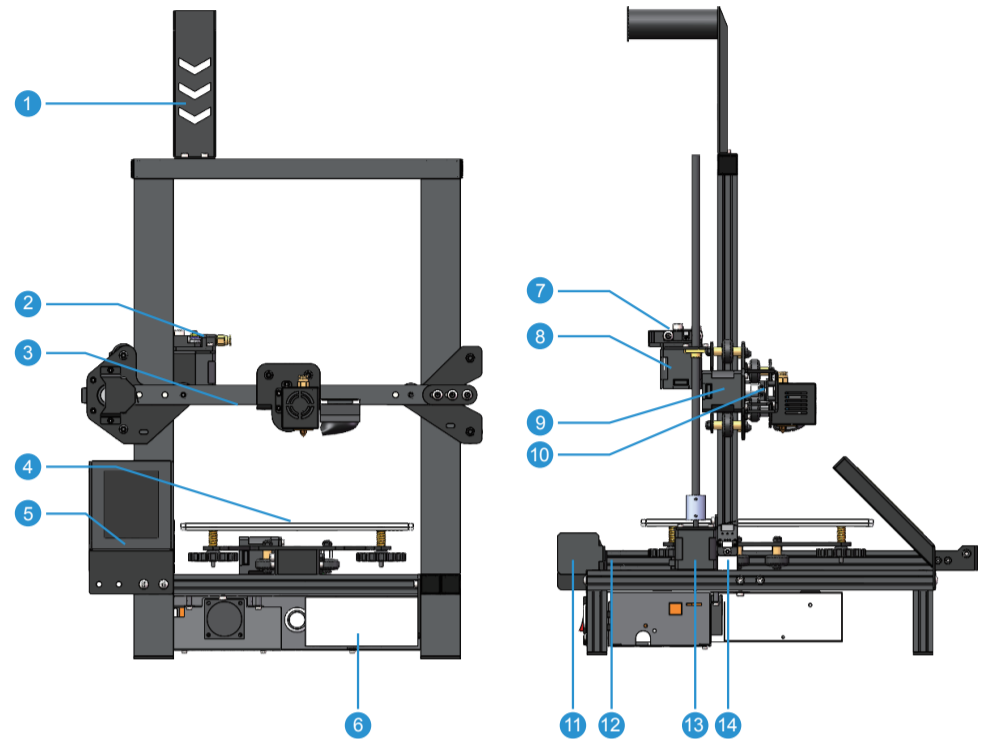
Please join our Facebook Group: Longer 3D Official Group
Email: Support@longer3d.com

If you have any question, please feel free to contact us as above.
*Copyright © Shenzhen Longer 3D Technology Co.,Ltd. All Rights Reserved

! ATTENTION !

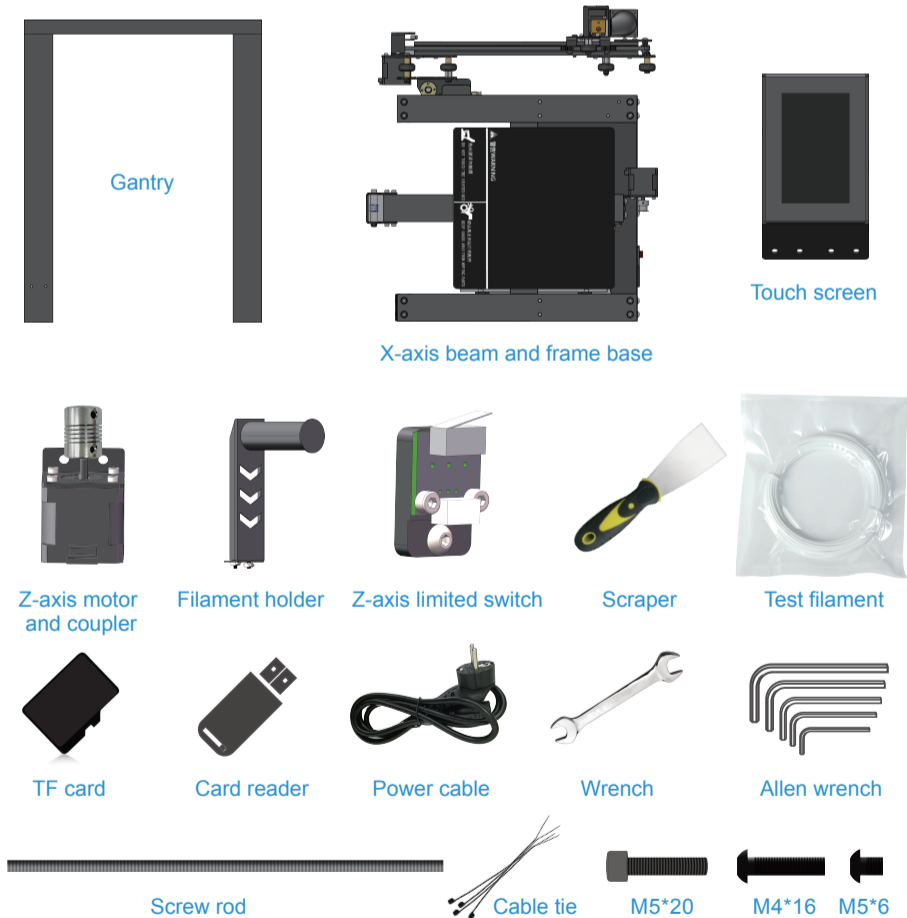
1. The working voltage is AC 115V or 230V. Please switch to the right input voltage on the side of the printer to meet with local voltage. (Default Voltage is AC 230V).
2. During printing, the temperature of nozzle will reach up to 250 ° C. To ensure your safety, do not touch the moving parts or the high temperature nozzle kits when printer is printing.
3. We suggest to turn off the printer for 1-3 hours if the printer is printing for more than 96 hours continually
4. Recommend the best environment is temperature at 25 ° C and humidity is 20% ~ 50%.

PRINTER INTRODUCTION

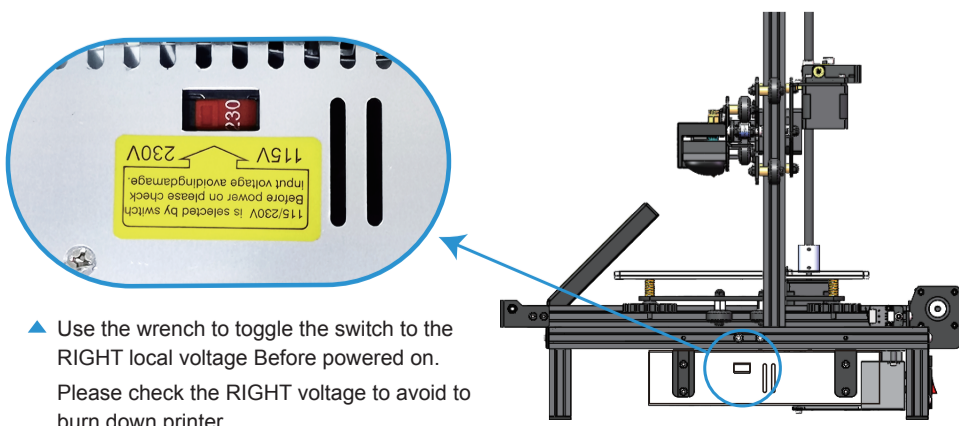


- | | | | |
|-------------------|-----------------------|--------------------------|--------------------------|
| 1 Filament holder | 5 Touch screen | 9 X-axis motor | 13 Z-axis motor |
| 2 Extruder | 6 Power supply | 10 X-axis limited switch | 14 Z-axis limited switch |
| 3 Hot end | 7 E filament detector | 11 Y-axis motor | |
| 4 Hot bed | 8 E extrusion motor | 12 Y-axis limited switch | |

PACKING LIST

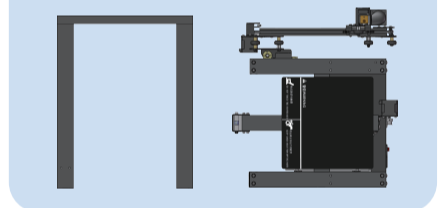
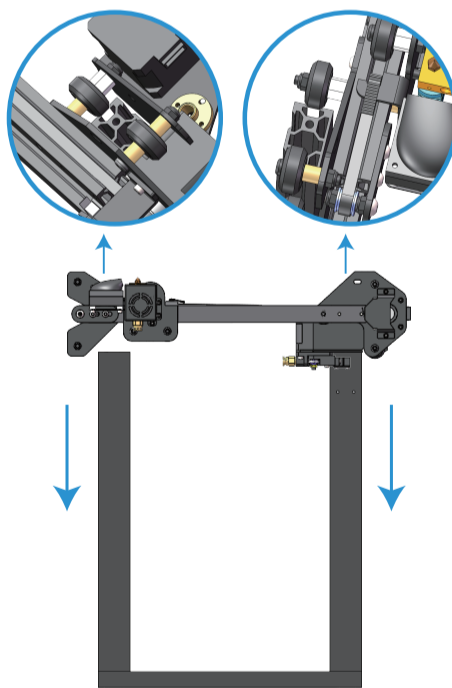


! POWER SWITCH !

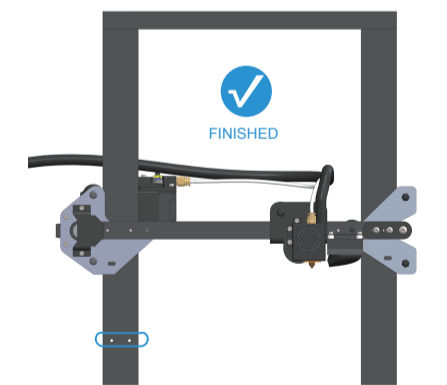


INSTALLATION STEPS

- 1** Preparation:
Gantry, X-axis beam and frame base

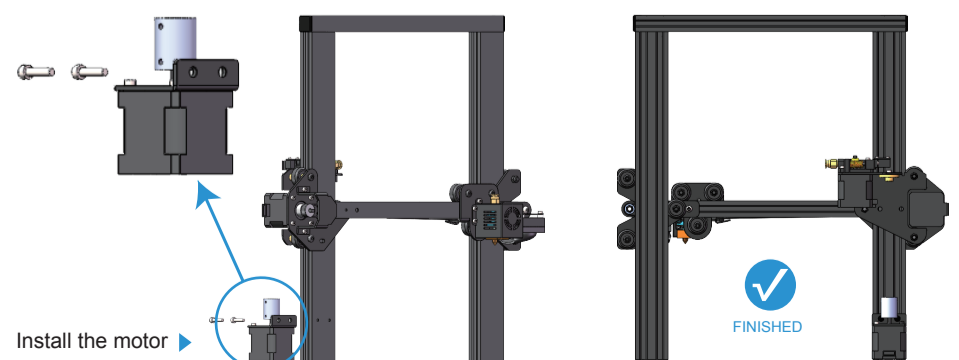
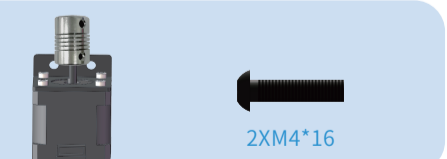


▶ Follow the direction of arrow and put the gantry frame through the X-axis beam carefully. Note: during installation, Do not to tear the cables. After assembling, the cables should be put behind.

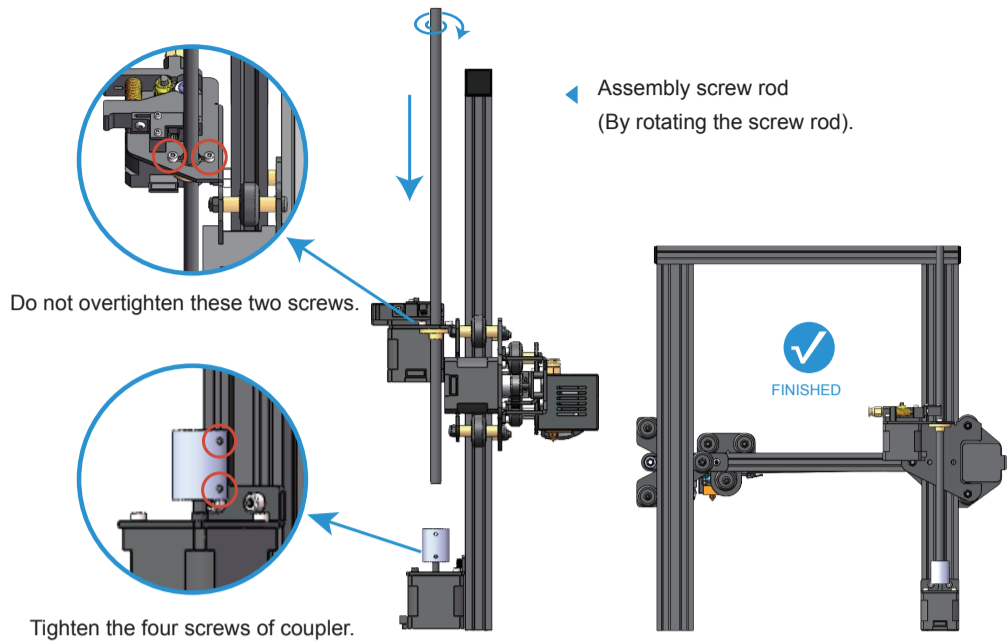
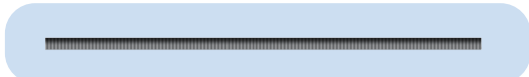


▲ Note: the frame with holes is on the left

- 2** Preparation:
Coupler, motors and screws

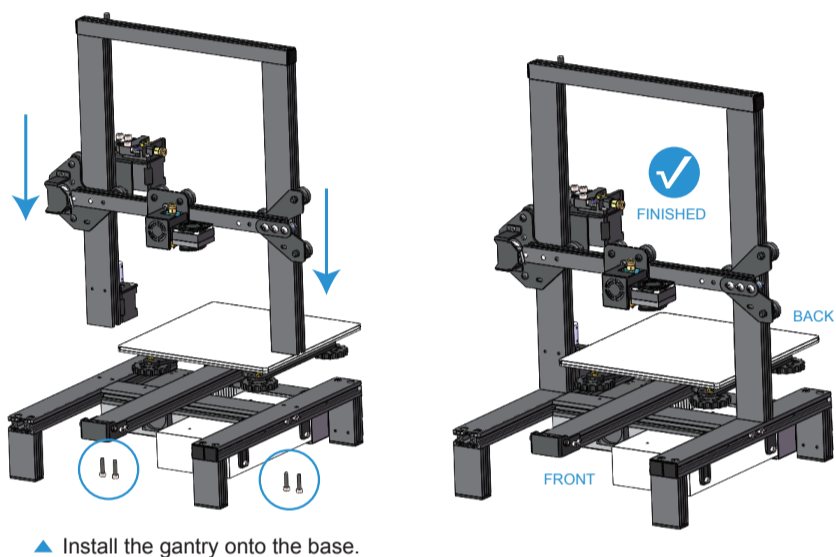


3 Preparation: Screw rod

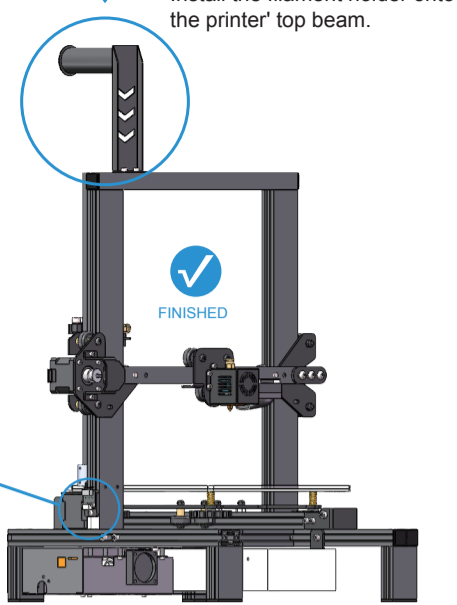
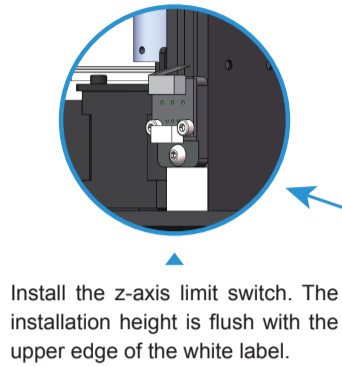
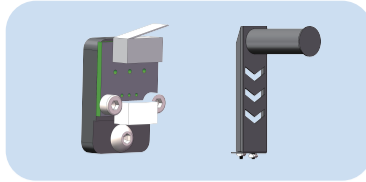


4 Preparation: Screws

4XM5*20

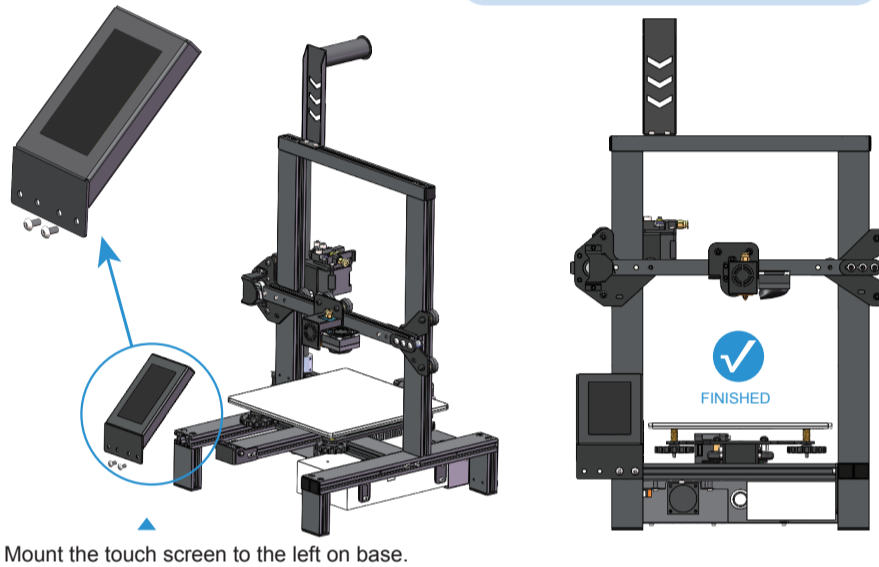


5 Preparation: Limited switch and filament holder



6 Preparation: Touch screen, touch screen back cover, screws

2XM5*6



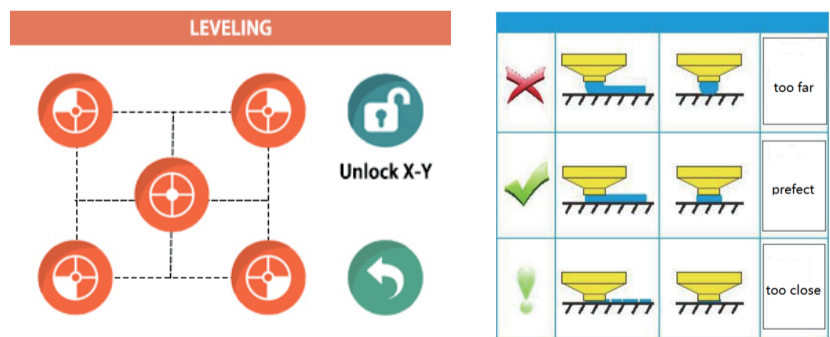
7 Connect:

Number of cables label	Two wires	Four wires	The picture below shows 2-wire cable and 4-wire cable
E	7	8	
X	10	9	
Y	12	11	
Z	14	13	
LCD		5	

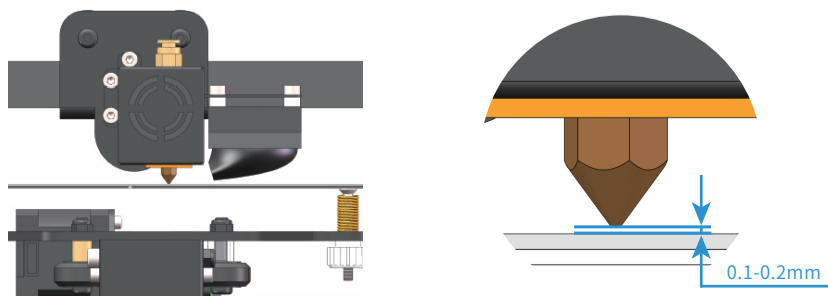
- * Please reference the printer description and cable terminals with orange rubber letters to connect the cables.
- * The numbers from 7 to 14 in the table above correspond to the serial numbers in the "PRINTER INTRODUCTION" section.

LEVELING

- Please click on the touch screen "More" -> "Leveling", starting from the icon in the lower left corner, click the icons counterclockwise in turn. After each click on the icon, wait for the nozzle to move to the corresponding position and adjust the leveling nut. Try to keep the nozzle and the platform at a proper distance.



- The distance between the nozzle and the platform is controlled to the height of 0.1-0.2mm, about the thickness of A4 paper.
(Put on a A4 paper, feel the slight friction when you pull the paper)

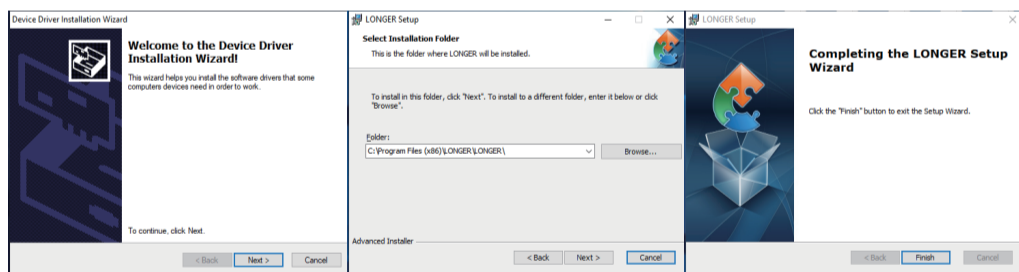


SOFTWARE INSTALLATION AND OPERATION

INSTALLATION



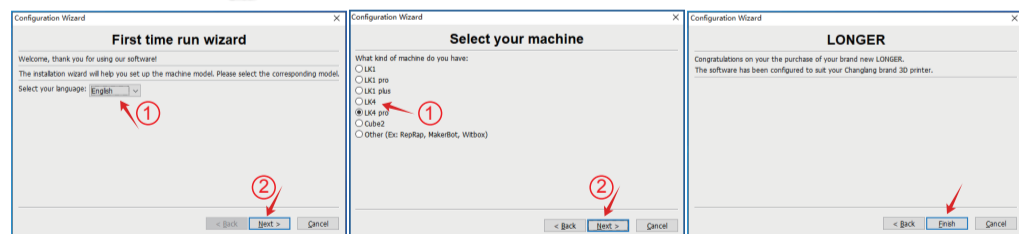
- Double-click to open the file with .msi, there's a pop-up window to appear, click "Next", "Confirm" and "Finish".
- Please save as default path when the slice software is installing, otherwise the slicer is not able to run normally.



SETTING

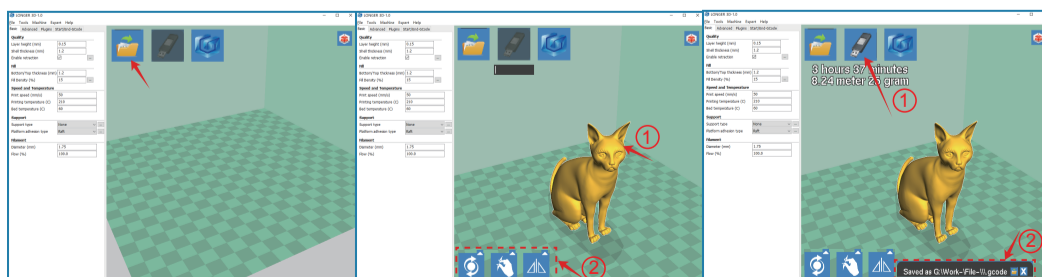


- Run the program select the software interface language in "English", select the model "LK4 Pro", select "Finish".



PROCEDURE OF SLICING

- Run the slicer of "LONGER 3D Slicer".
- Modify printing parameters, import model file -> edit model -> export as Gcode file (save path is on the bottom of slicer window).
- Copy the file into TF card, insert it into the printer, power on the printer, select the printed file, and start printing.



MORE INFORMATION



Support Email : support@longer3d.com



Youtube channel: Longer 3D



Facebook ID: longer3dprinter



Facebook Group: Longer 3D Official Group